

# Scalewatcher®



The solution for milkstone problems in the dairy sector



Milk producing farmers spend a lot of money on cleaning of ducts for removing milk stone and reducing the number of bacteria in the end product annually.

Scalewatcher can save money by reducing deposits and by reducing bacterial colonies.

## Field reports show:

- Improves the registration of flow meters.
- Softens and may remove existing milk stone.
- Reduces bacteria in milk.
- Prevents formation of milk stone on sensors of milking machines
- Saves on costs for chemicals and maintenance
- Pays for itself within a year.



## Advantages of Scalewatcher:

- No production stop for installation
- Uses no chemicals
- Maintenance free
- No change in quality of milk
- Negligible energy consumption
- Faster cleaning



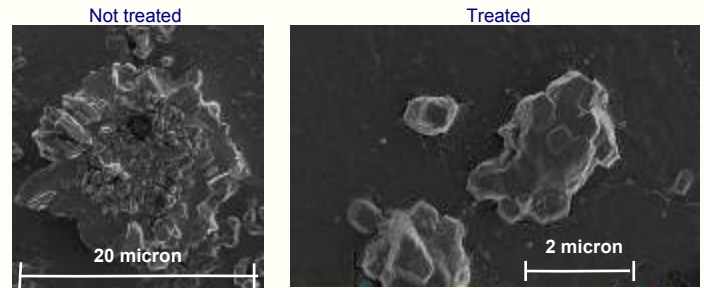
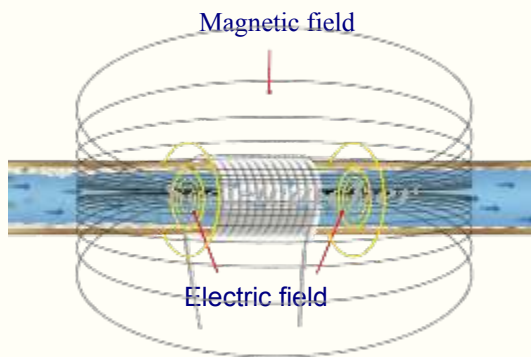
# Scalewatcher®



## The solution for milkstone problems in the dairy sector

### What is the operating principle?

The mechanism of action has been established for Calcium Carbonate minerals in water. Since milk consists for about 85% of water this can be used for the same. The treatment affects the initial crystal growth in the bulk of the water/milk in the sense that the resulting crystals are smaller and rounder and therefore do not tend to adhere to surfaces. Without treatment, the crystals are larger and more erratic with sharp edges and therefore bind more easily. Since no new limestone layers are formed old layers will disappear



Bacteria will multiply less rapidly and already formed colonies are destroyed as evidenced by the following photos with water as a medium.



In the left hand disc bacteria were inoculated. After three days, the disk was placed in the Scalewatcher field. After two days, there are significantly fewer bacteria. A report is available on request.

## Product Specifications

### Components:

Each model comprises of a Scalewatcher unit, signal cable, ties, plugs and clear instructions.

### Power:

Units can be connected to either 110 VAC or 230 VAC 50/60 Hz. Optional: Solar power or 24 Volt direct current.

### Materials:

Electronics hermetically sealed. Enclosures for indoor use are made of high grade thermoplastic. Enclosures for outdoor use are made weatherproof.

### Controls & Indicators:

All units have indicators showing correct operation, providing power applied and signal coil connected.

### Reliability:

Only high quality electronic components are utilized, including a custom designed chip (IC) controlling signal generation processing. Components have a life span of over 20 years.

### Safety:

The Scalewatcher conforms to electrical safety standards. The electronics are sealed with resin. The output is safe to both personnel and sensitive equipment. There is no electrical contact between pipe and coil. The low output voltage is non hazardous.

Scalewatcher systems are also available for domestic, commercial, Industrial and agricultural applications capable of treating pipe work ranging from 5 mm to 3000 mm irregardless of flow rate.

### Manufacturer's warranty:

*Ten years for the residential models, five year for all other models.*

### Your Supplier:

